

←Layout.

Arrange the cutting-plane line (D-D') fit for your shirt.

Cut 2 pieces of fabric 6cm × 58cm for handles.

Handle position

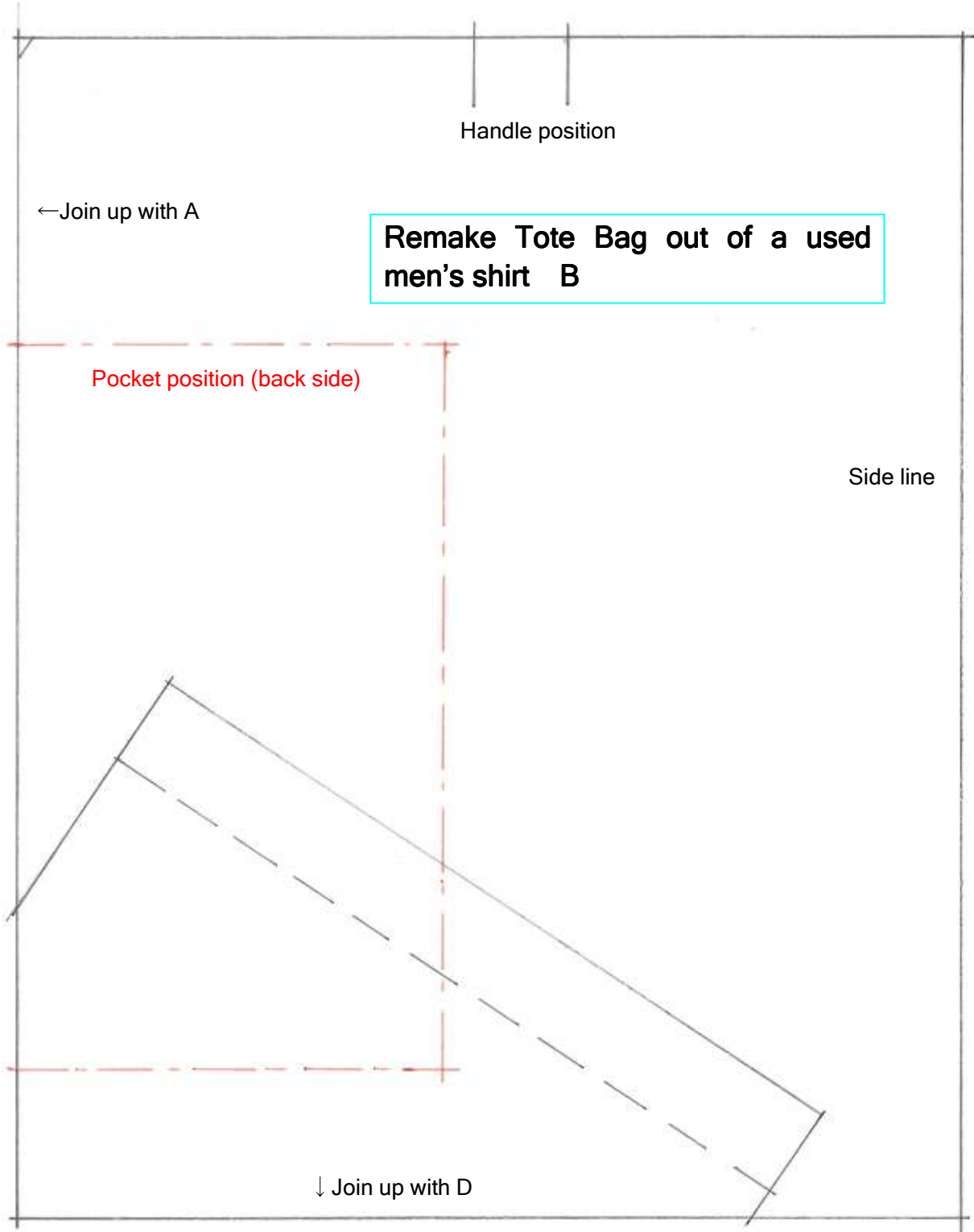
←Join up with A

Remake Tote Bag out of a used men's shirt B

Pocket position (back side)

Side line

↓ Join up with D





↑ Join up with A

**Remake Tote Bag out of a used
men's shirt C**

Side line

Join up with D→

↑ Front Pocket Topstitch

Bottom

Remake Tote Bag out of a used men's shirt D

↑ Join up with B

← Join up with C

Cutting-plane line

Side line

Topstitch

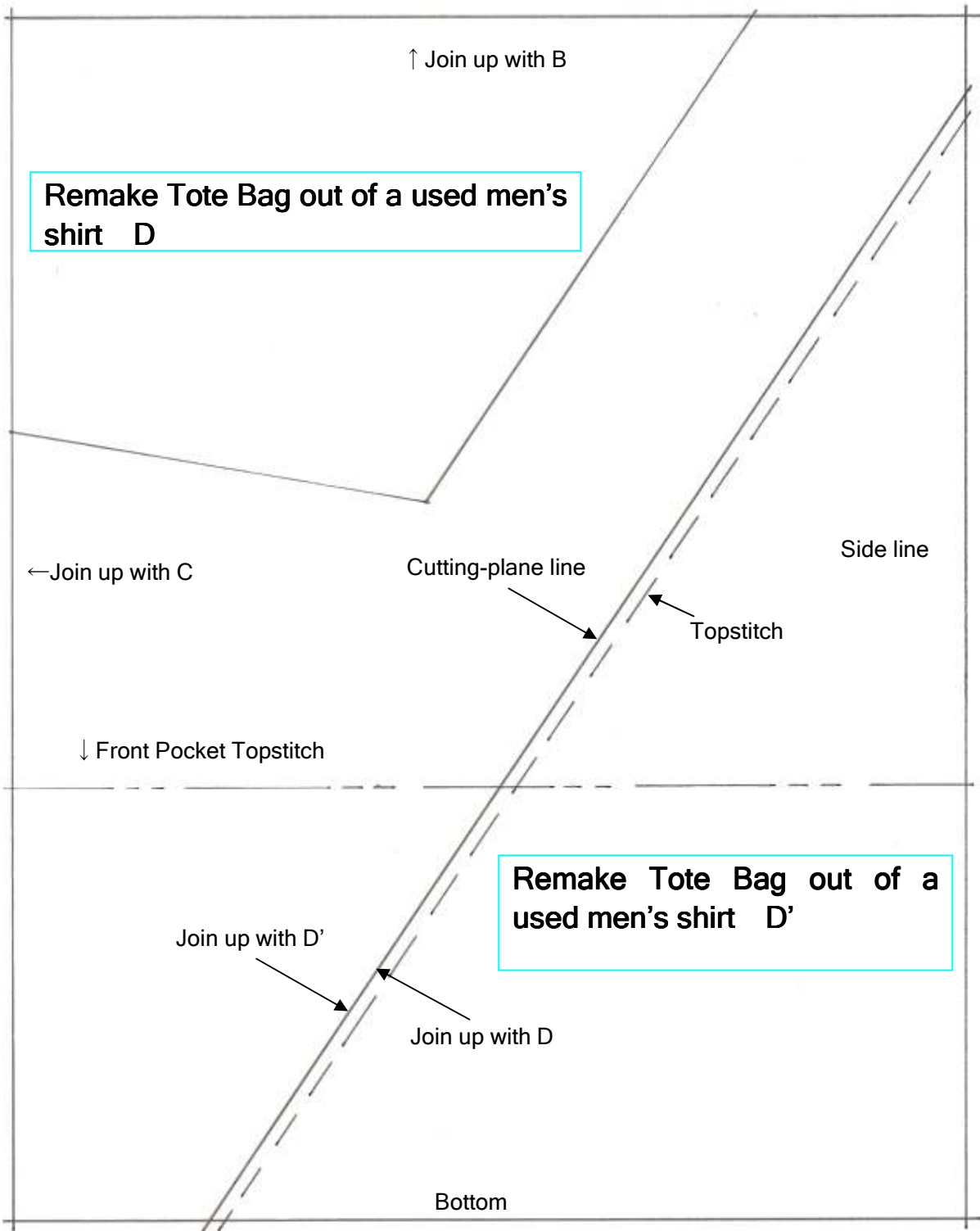
↓ Front Pocket Topstitch

Remake Tote Bag out of a used men's shirt D'

Join up with D'

Join up with D

Bottom



↑ upper edge (mirror image)

Pocket (back side)